

Led ShowUser Manual

1、 Setup & Environment

Introduction

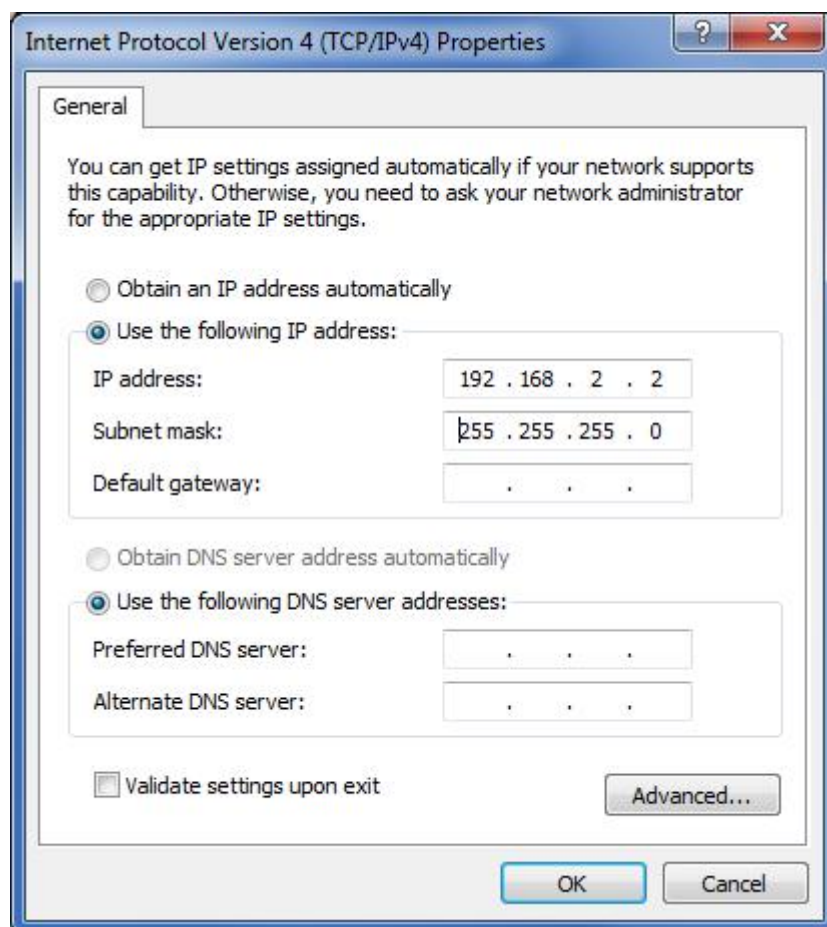
LEDshow is designed for LED program play and management. It mainly applied to full color LED display, both synchronous and asynchronous control system.

2、 Set PC's IP address

Set up your IP address using the following format:

Default IP of Asynchronous Card is 192.168.2.249 and 255.255.255.0.

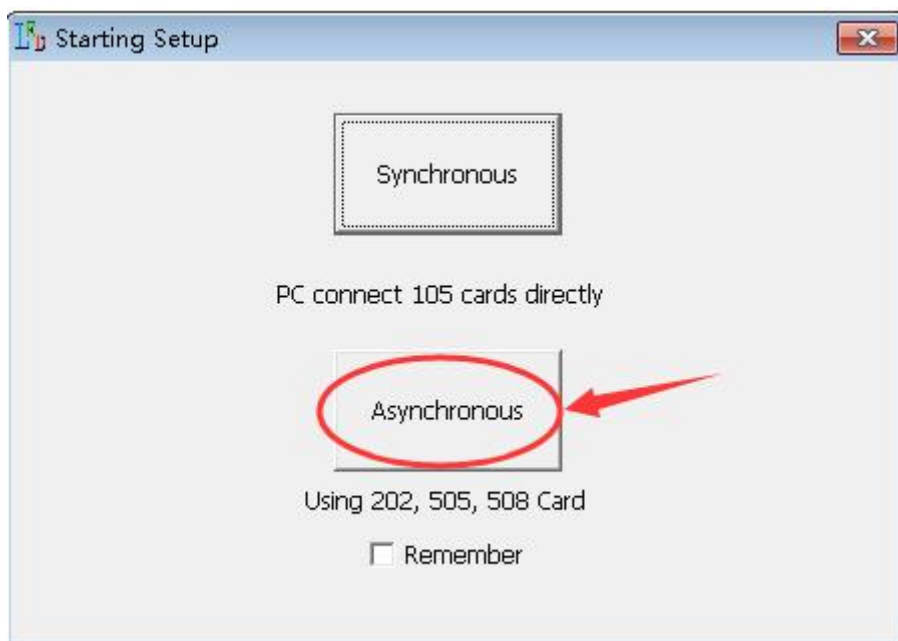
It is **BEST** to set the IP address as following if there is no special condition.



3、R30Running



After installation, Click LedShow shortcut on desktop ;

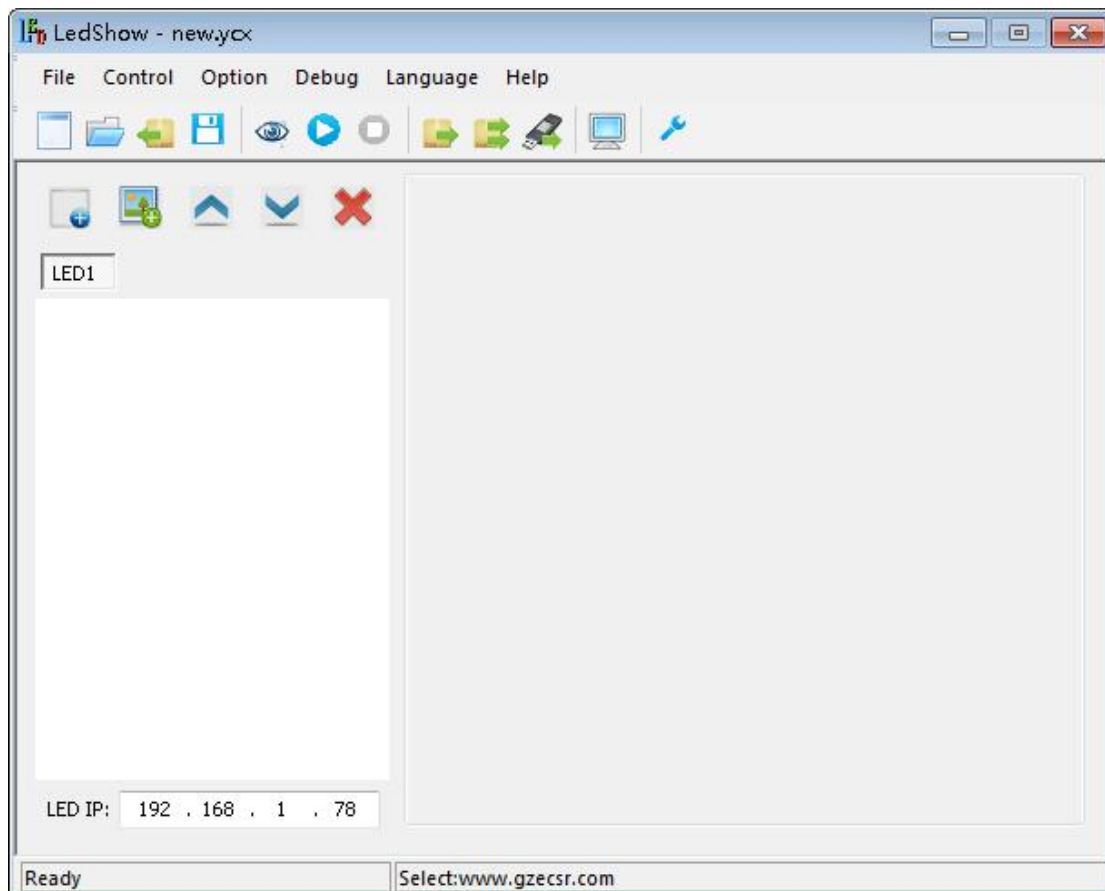


Choose the program you want to star.


Click “remember”, next time you will run the program directly.


If you want to switch to the other program, just click “Option” – “Start setting”, select default program again.


Main Panel of LedShow





Quick Access Toolbar


New Playlist : to create a new playlist.


Open Playlist : to open existing playlist.


Get Card Playlist : to load playlists saved in Asynchronous Card (505 Card) to computer.


Save Playlist : to save the currently editing playlist.

Play : to play the currently selected playlist.

Stop : to stop the currently playing program.


Send to Card : to export playlist to 505 Card.


Software Setting  : to set up configuration of the software.


Sync/Async Switching  : switch from sync mode and async mode.


Playlist Control Panel




Add Page  : to add an ordinary playlist. Playlists are displayed according to their orders.

Add Window  : to add file window in one playlist.

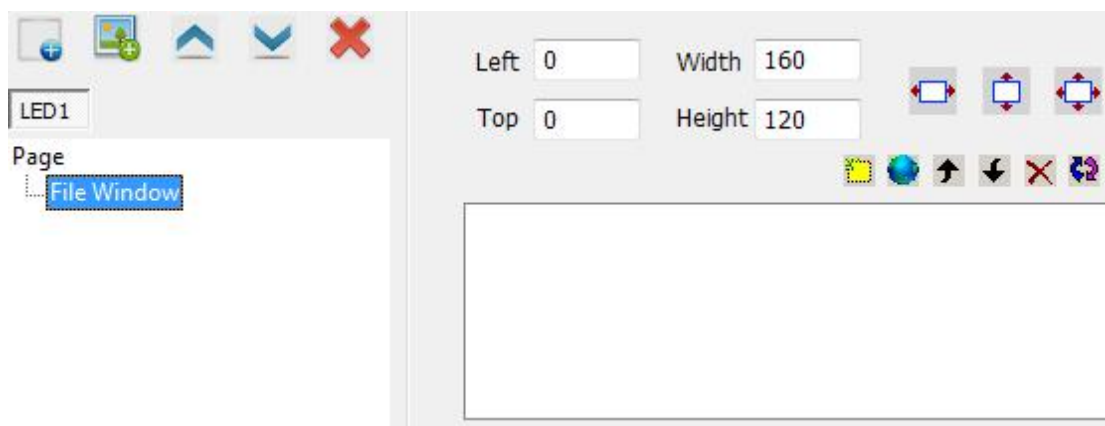
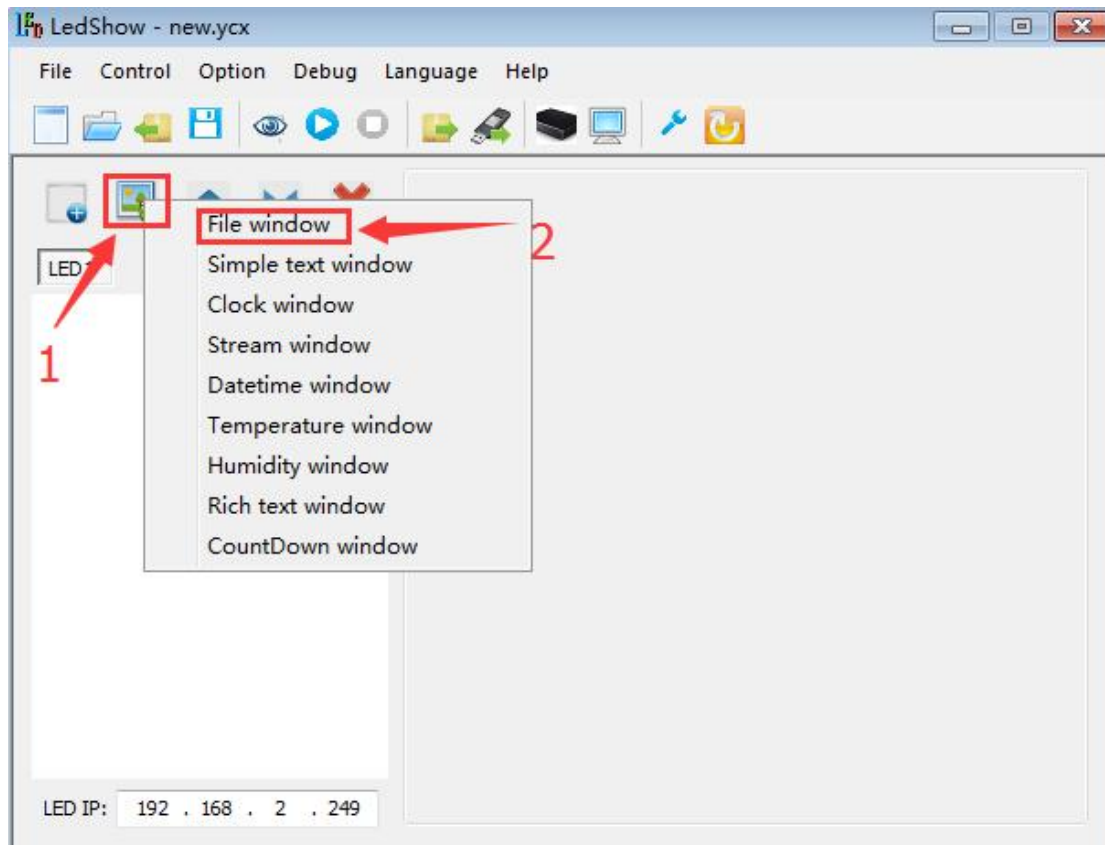
Move Up  : to move up the selected playlist.


Move Down  : to move down the selected playlist

Delete Window  : to delete selected window or playlist.

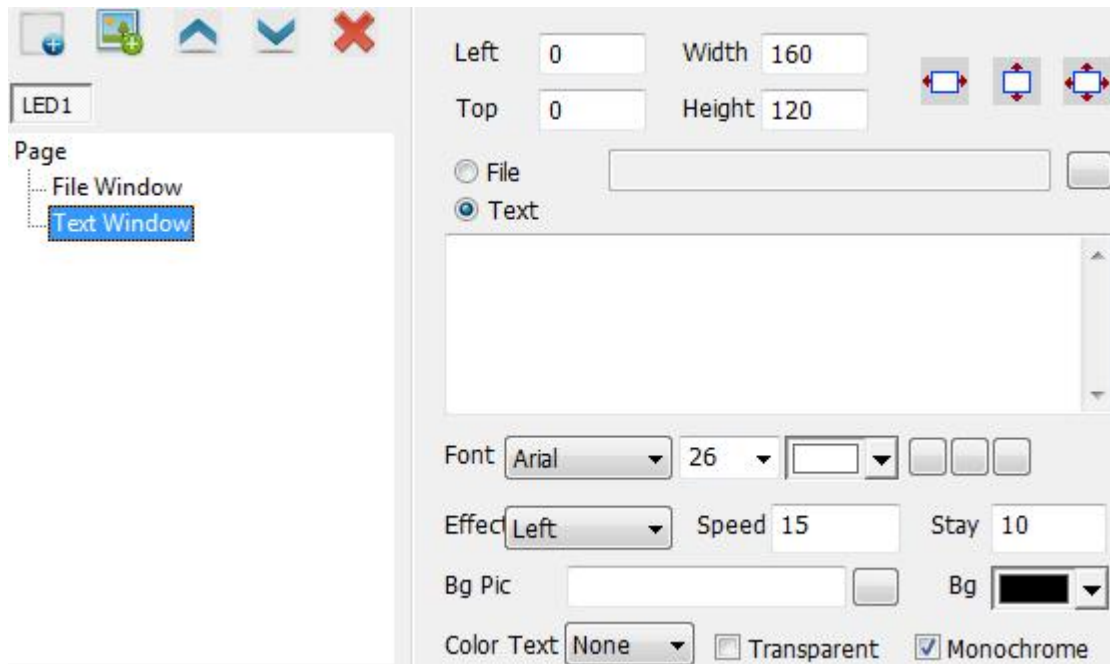
File Window Control Panel


Select a file window on the left side of the main window to open **File Window Control Panel**.



Add File  : to add file from local computer or terminal. To save files in terminal, you can transfer files from computer to terminal through flash drives or Internet.

Simple Text Control Panel

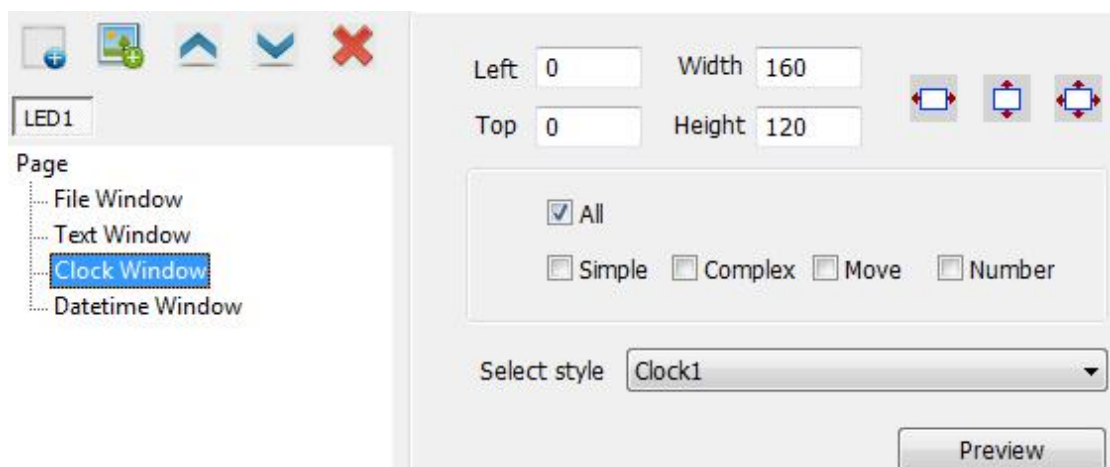


Click  to maximize the window.

Speed: 0 is the fastest speed. The larger the number is, the slower the speed is.

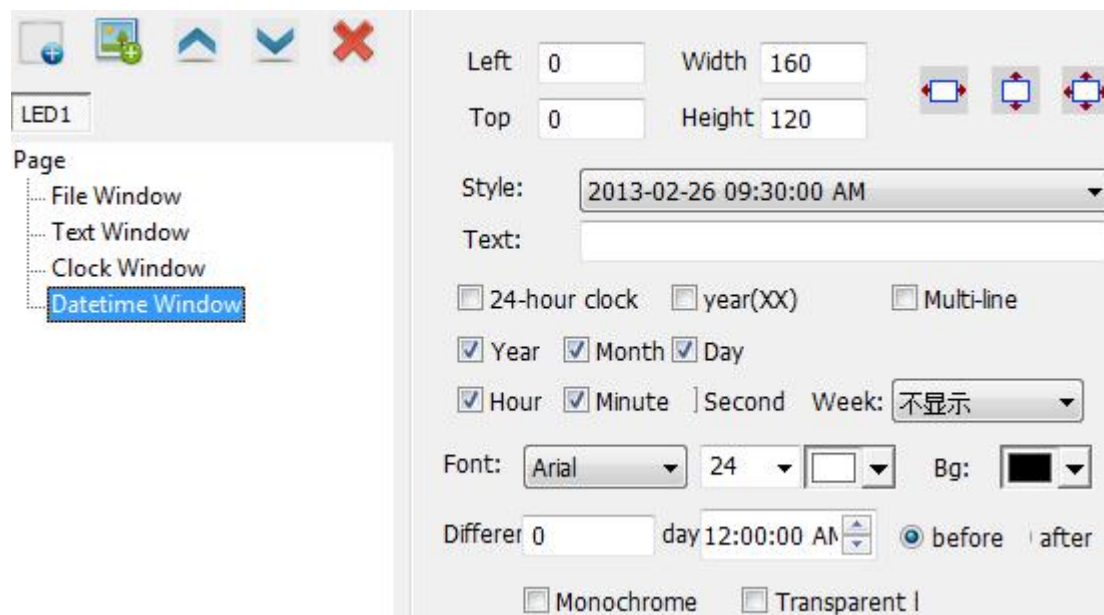
Clock Window Control Panel

Clock Window is capable of presenting time.



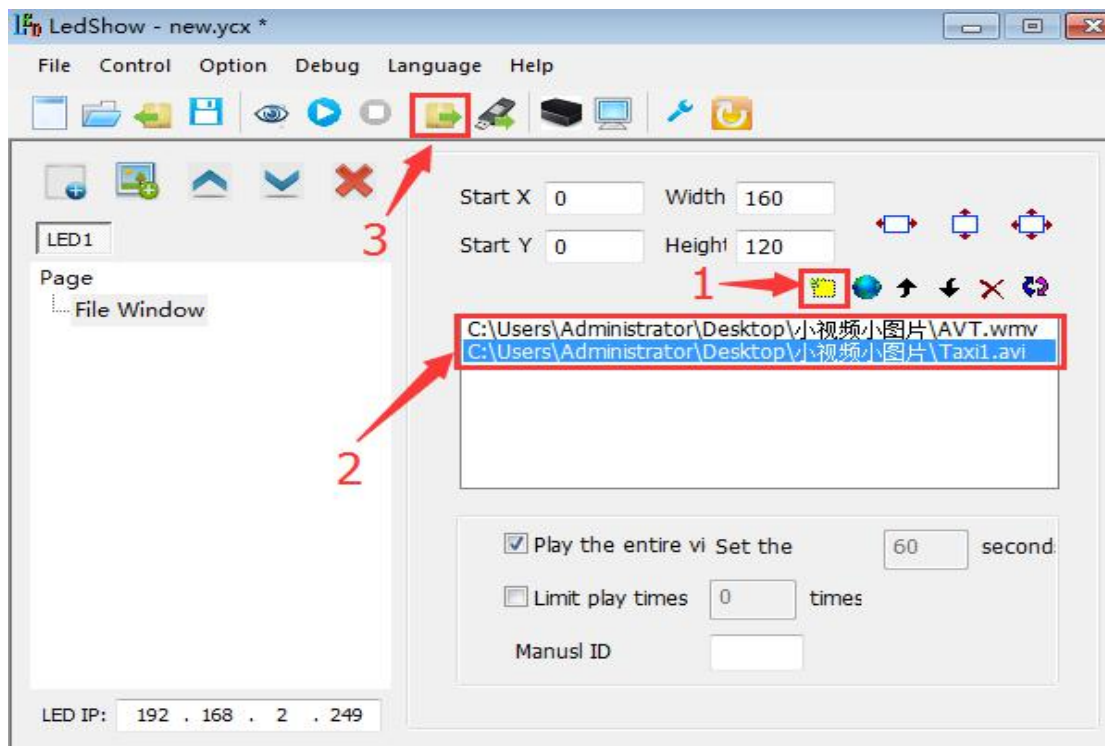
Datetime Window Control Panel


Functions of Datetime Window include showing lunar calendar, countdown, etc.

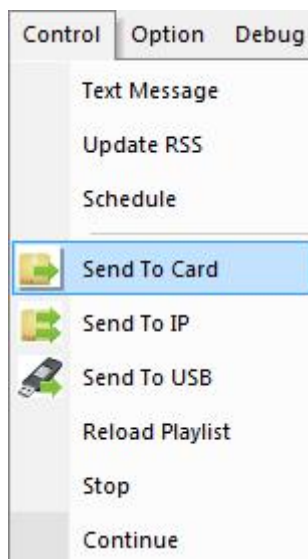


Update Playlist

Send to Card

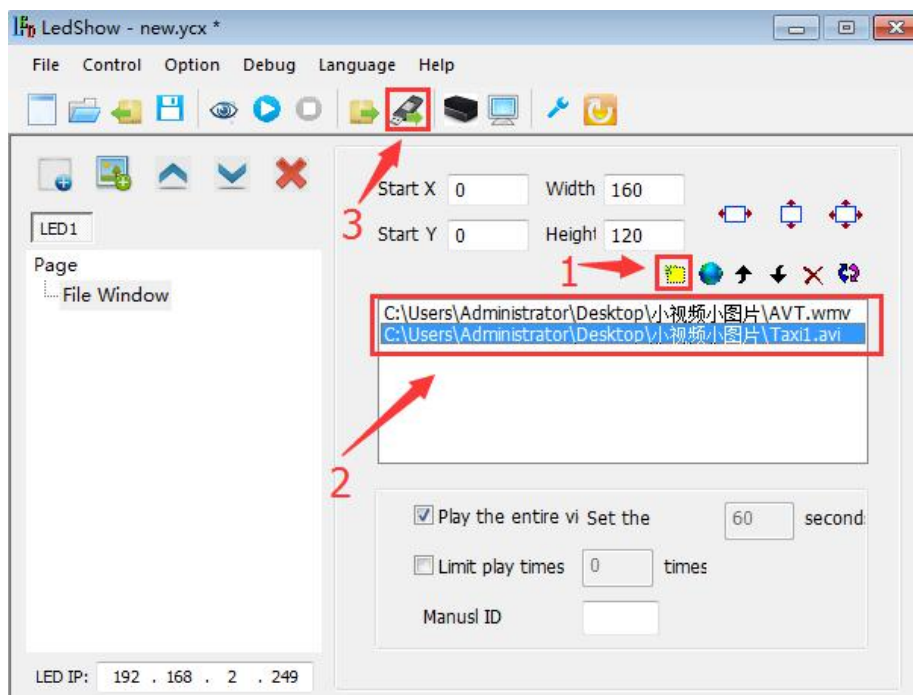
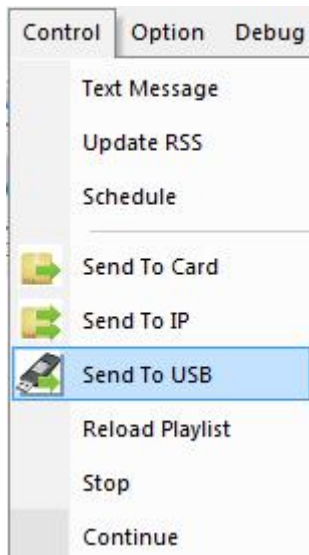


After finishing editing playlist, click Control → Send To Card or simply click  to send playlist to terminal .



Send to USB

Click Control → Send to USB to send saved playlist to flash drive. LedShow will automatically scan for flash drive and portable hard disk. Select the appropriate flash drive, then click OK to finish.



After the file is transferred to the flash drive, insert this flash drive into the USB hubCard will automatically download playlist file from the flash drive. Previous playlist saved in will be permanently deleted. When download is finished, will automatically reboot. After reboot, you can remove the flash drive and start playing the new playlist.

Delete Playlist or File

To delete playlist, click Option → Card Setting → Playlist and select the playlist that you want to delete. Click Delete to finish.

To delete file, click Option → Card Setting → Card Files and select the file that you want to delete. Click Delete to finish.

